

*Wraysbury*



*Primary School*



# Welcome to Key Stage 2 ☺

## Year 3

Mrs Jenkinson, Sparrows class  
(Mrs Morrissey on a Friday)  
Miss Black, Robins class

## Year 4

Miss Bridger, Woodpecker class  
Miss Dally, Kingfisher class

## Year 5

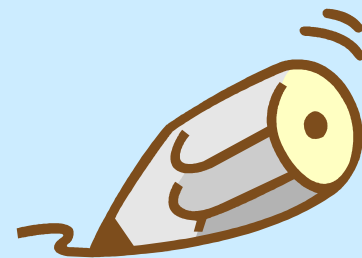
Mrs. Reznichenko, Red Kites class  
Miss. Mackay, Owls class  
(Mrs Morrissey on a Wednesday)

## Year 6

Miss. Carty, Falcons class

### Teaching Assistants:

Mrs Newell, Mrs Asher, Mrs Taylor, Mrs Khan, Mrs Clarke, Mrs Ibom, Mrs Collins, Mrs Finnigan, Ms Laverty





# UNIFORM

PLEASE PLEASE PLEASE !!!!

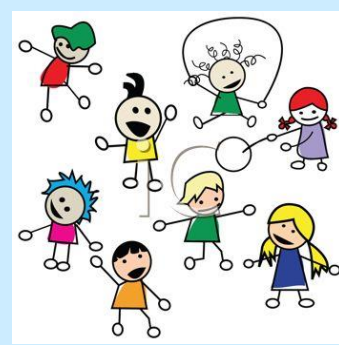
Make sure all uniform is clearly labelled including shoes and coats.



- Book bags/Rucksacks - only **very small** keychain permitted.
- Hair bows - small blue/black ones only please.
- Earrings - only small studs.
- No other jewellery should be worn apart from a religious bangle. These must be removed for P.E.
- Water bottle
- A small pencil case that will fit in their tray



# P.E.



- All children must have blue PE shorts, white t-shirt and trainers.
- Dark coloured tracksuit bottoms and dark coloured sweatshirt/tracksuit top.
- Girls need white socks if they wear tights.
- No earrings for PE.
- Please have PE kits in school all the time as days can change because of timetable commitments,

# PE Days

**Year 3**

**Mrs Jenkinson-Wed/Fri**

**Miss Black-Thurs/Fri**

**Year 4**

**Miss Bridger-Wed/Thurs**

**Miss Dally-Thurs/Fri**

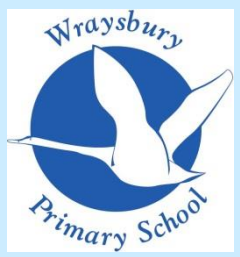
**Year 5**

**Mrs. Reznichenko-Thurs/Fri**

**Miss. Mackay-Wed/Thurs**

**Year 6**

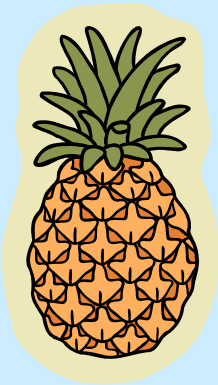
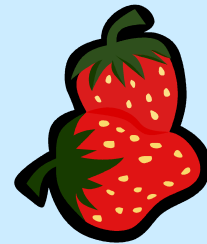
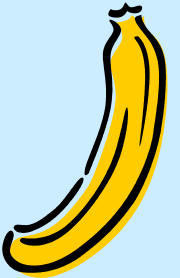
**Miss. Carty-Thurs/Fri**



# HEALTHY EATING

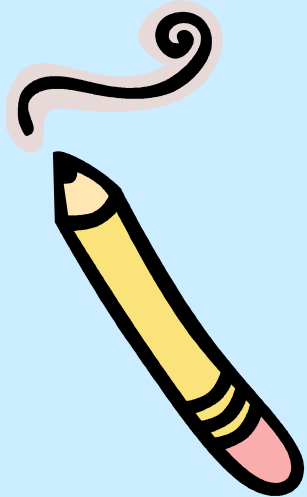
Fruit/vegetables to be eaten at break.  
Please send your child in with a snack - it  
is a long time until KS2 lunchtime (Years 5  
and 6 go at 1.00 pm!)

Water in a named water bottle.





# THE CURRICULUM



# In KS2 we cover the following subjects:

Maths

English

Science

Art

DT

Music

Computing

French

PE

Geography

History

PSHE

RE



Curriculum Maps - website



# Assessment

We are continually assessing the children in all lessons.

PiXL- we will carry out 3 formal assessments throughout the year for Maths and English

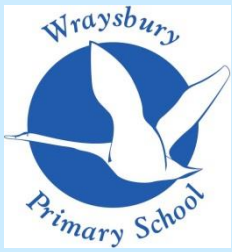
Writing - we assess independent writing against different objectives as class teachers and in moderation sessions

Year 6 - SATS in May (12<sup>th</sup>-15<sup>th</sup> May)

Year 4 - Multiplication test (First two weeks in June)

# Homework

- Spellings (spelling shed)
- Reading (x 5 a week to include one day over the weekend. Please sign reading record)
- TT Rockstars (x 3 sessions a week)
- Topic- a list of tasks will be set by the teacher each half term. (creative and knowledge based)
- Homework will be due in on Fridays so that we can share our work in class.



# HOMework

- Homework will be directly connected to the Topic we are working on each term.
- The children will choose activities from a homework 'shopping list' that will range from short tasks to longer more in depth tasks.
- Homework completed will be due in on Friday so that we can share our work in class.
- Please get involved; it provides an ideal opportunity to share the wonderful learning taking place in our classrooms.

# Pastoral Care and Mental Wellbeing

- PSHE Jigsaw- Mindfulness Approach with embedded reflection time.
- Zones of regulation
- ELSA (Emotional Literacy Support Assistants)

Thank you for listening!

Any Questions?

